



NSW Population Futures

**Local Insights consultation pack for the
Griffith Local Government.**

NSW Population Projections update

The Population Futures team is currently developing the next update to the NSW Government's Population Projections, to be released in 2019.

NSW Government agencies use the Department's Population Projections as the basis for policy development, service planning and infrastructure investment.

Population Projections model population change by making assumptions about future fertility, mortality and migration. Using the ABS Estimated Resident Population (ERP), the projections are calculated by directly applying the assumptions below.

The assumptions are:

- Births and fertility rates
- Deaths and life expectancy
- People coming and going

The assumptions attempt to take into account all available information which may influence population growth and distribution. This includes local knowledge that we collect from Councils.

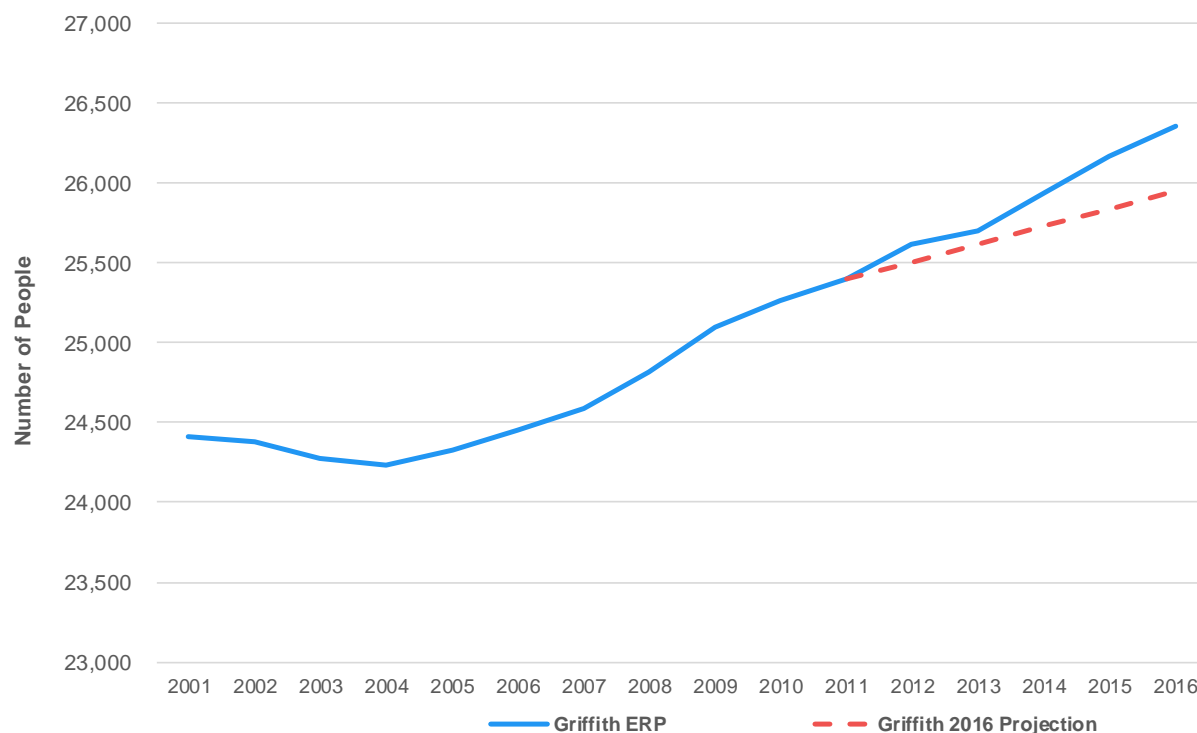
This information pack will provide you with an overview of:

- State level population change
- How your region compares to the state
- Current trends in Griffith

To help NSW Government make accurate projections of NSW's future population, we are seeking your feedback on how the data on Griffith compares with your view.

Projections compared to the actual population

Comparison between the Griffith 2016 population projection and the 2016 ERP.



The Population Futures team regularly reviews our current projections with the latest population estimates.

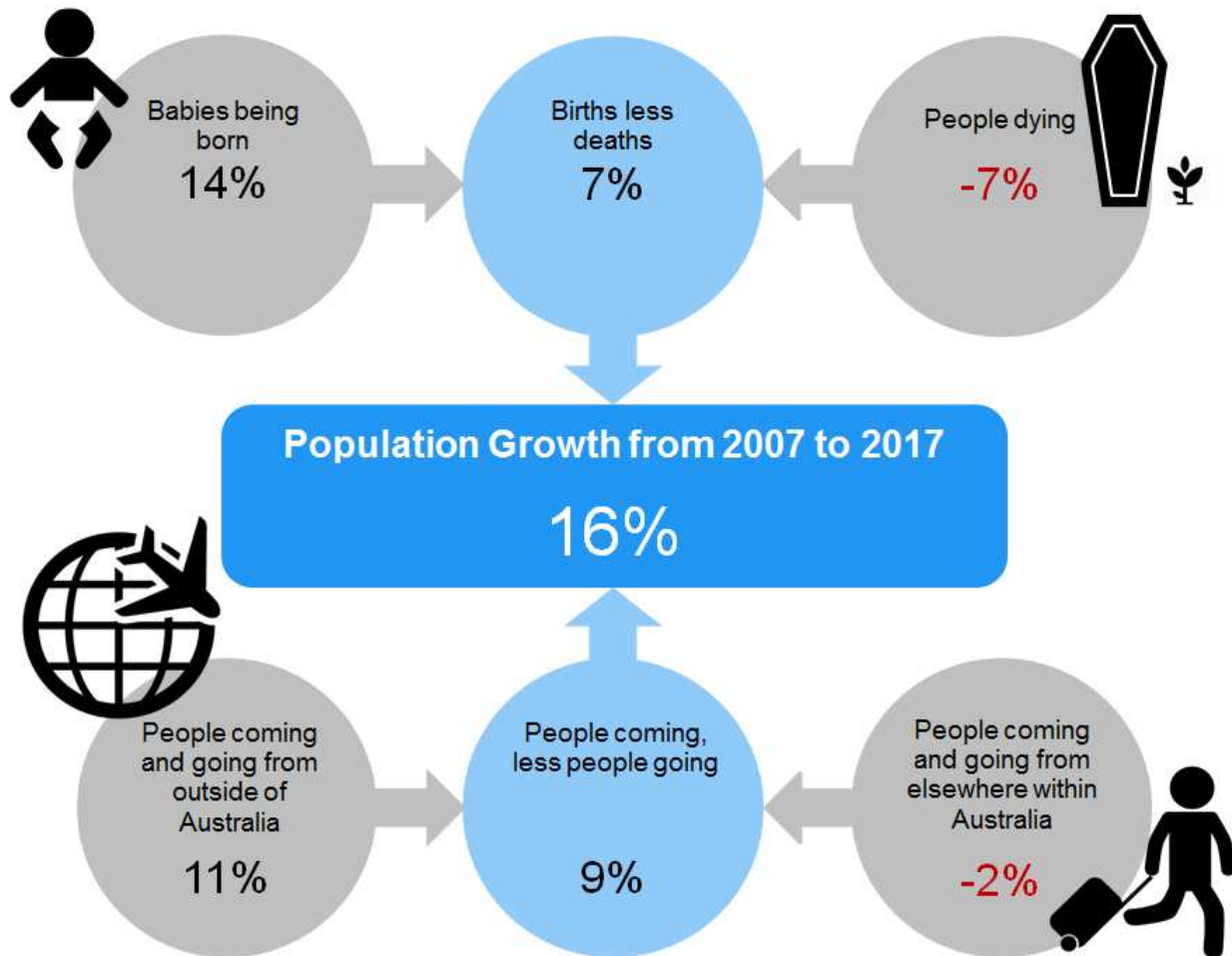
To show the difference, the graph to the left compares the 2016 ERP with the 2016 projection.

Future projections for Griffith will likely be consistent with historical population trends.

The 2016 projections were calculated prior to the 2016 Census and are therefore projected from 2011 based on the 2011 Census dataset.

Estimated Resident Population (ERP) is the ABS's official estimate of the actual population. The ERP differs from the Census population as it accounts for Census undercount and people overseas on Census night.

Contribution to population change in NSW



NSW has consistently grown over the last 10 years with twice the number of babies being born as people dying.

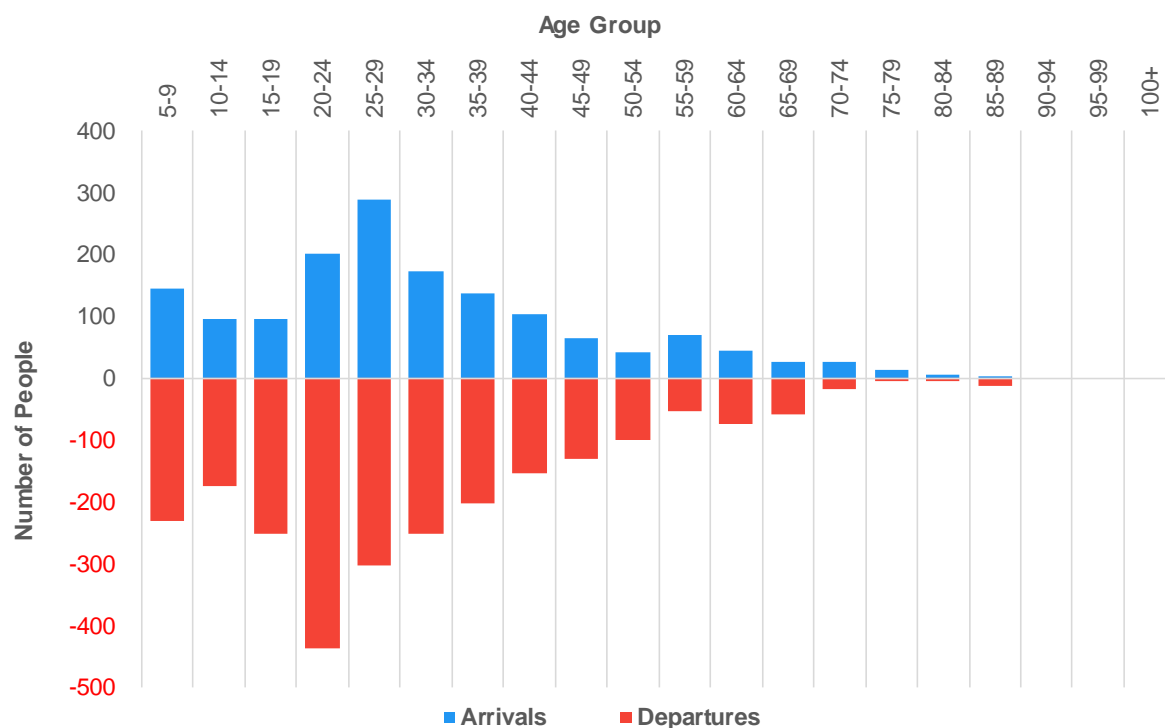
- The NSW population grew by 16% between 2007-2017.
- Population mobility played a greater role than natural increase in population growth within NSW.

While the difference between babies being born and people dying is important, the most important factor determining population change for towns in NSW is people moving to and from the area.

Most change is due people moving between locations within NSW

People coming and going in Griffith

Number of people arriving and departing from Griffith by age between 2011 and 2016.



Arrivals include everyone who came to Griffith and stayed between 2011 and 2016 from elsewhere within Australia.

Departures include everyone who left Griffith between 2011 and 2016, who moved to elsewhere within Australia.

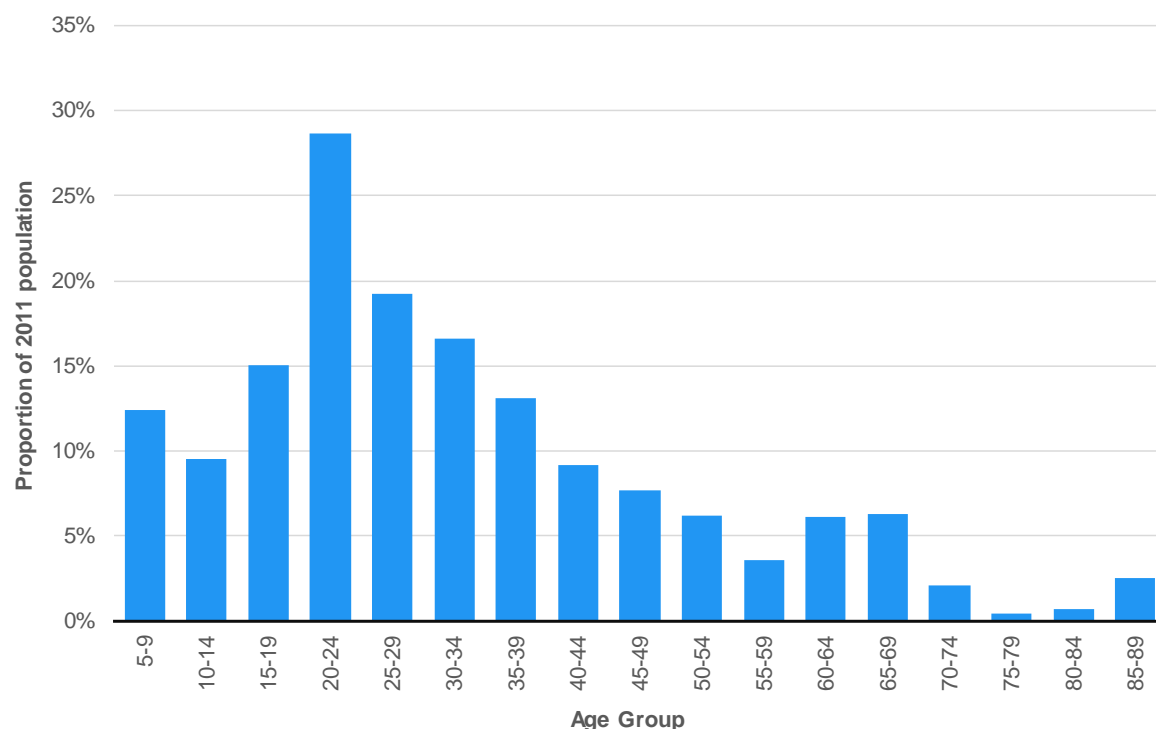
There were 899 more people departing from Griffith than people arriving.

This does not include people who moved to, or arrived from, overseas.

Griffith	
Arrivals	1,548
Departures	2,447
Net	-899

People leaving Griffith

Proportion of people departing from Griffith by age between 2011 and 2016.



Source: ABS 2016 Census TableBuilder Pro – customised table

The number and age of people departing an area has a significant impact on growth over time.

For example, departures of people aged between 24 and 34 will have an impact on the births forecast for an area.

Departures data is derived from the Place of Usual Residence questions in the 2016 Census.

High proportions indicate a large number of residents are moving to different places within Australia in a 5-year period.

Understanding the age profile of an area is vital for making planning decisions around infrastructure and services including hospitals, schools and transport.

Departures are calculated based on the number of people who live outside of Griffith, that reported in the 2016 census as living in Griffith 5 years ago.

Griffith movers – where do they come from, and where do they go?

Of people moving **to** an address in Griffith, **67%** had moved **from** elsewhere in Griffith, after that – **these are the next 10 places where people moved from:**



Of people moving **from** an address in Griffith, **58%** were moving **to** elsewhere in Griffith, after that – **these are the next 10 places where people moved to:**



How your region compares to NSW



NSW	
Total Fertility Rate	1.81
Life Expectancy at birth (Males)	81.8
Life Expectancy at birth (Females)	85.8

Riverina Murray Region	
Total Fertility Rate	2.02
Life Expectancy at birth (Males)	80.1
Life Expectancy at birth (Females)	84.7



Total Fertility Rate is the number of babies, on average, a mother will have over her life.

Life expectancy at birth is the life expectancy of a baby born today in years.

How you can help

The region-level assumptions inform how we develop local-level assumptions and projections.

We are keen to hear from councils that feel that their local area has different population drivers from their broader region.

We are keen to understand factors such as:

- *Government and private sector initiatives*
- *Significant development and land releases*
- *Infrastructure projects*
- *Socioeconomic factors*

For more information
contact:

population.futures@planning.nsw.gov.au



Please complete the accompanying survey and return to
population.futures@planning.nsw.gov.au