

Tharbogang Waste Management Centre

Hillside Drive, Tharbogang NSW 2680

PRE-INCIDENT PLAN (FIRE)



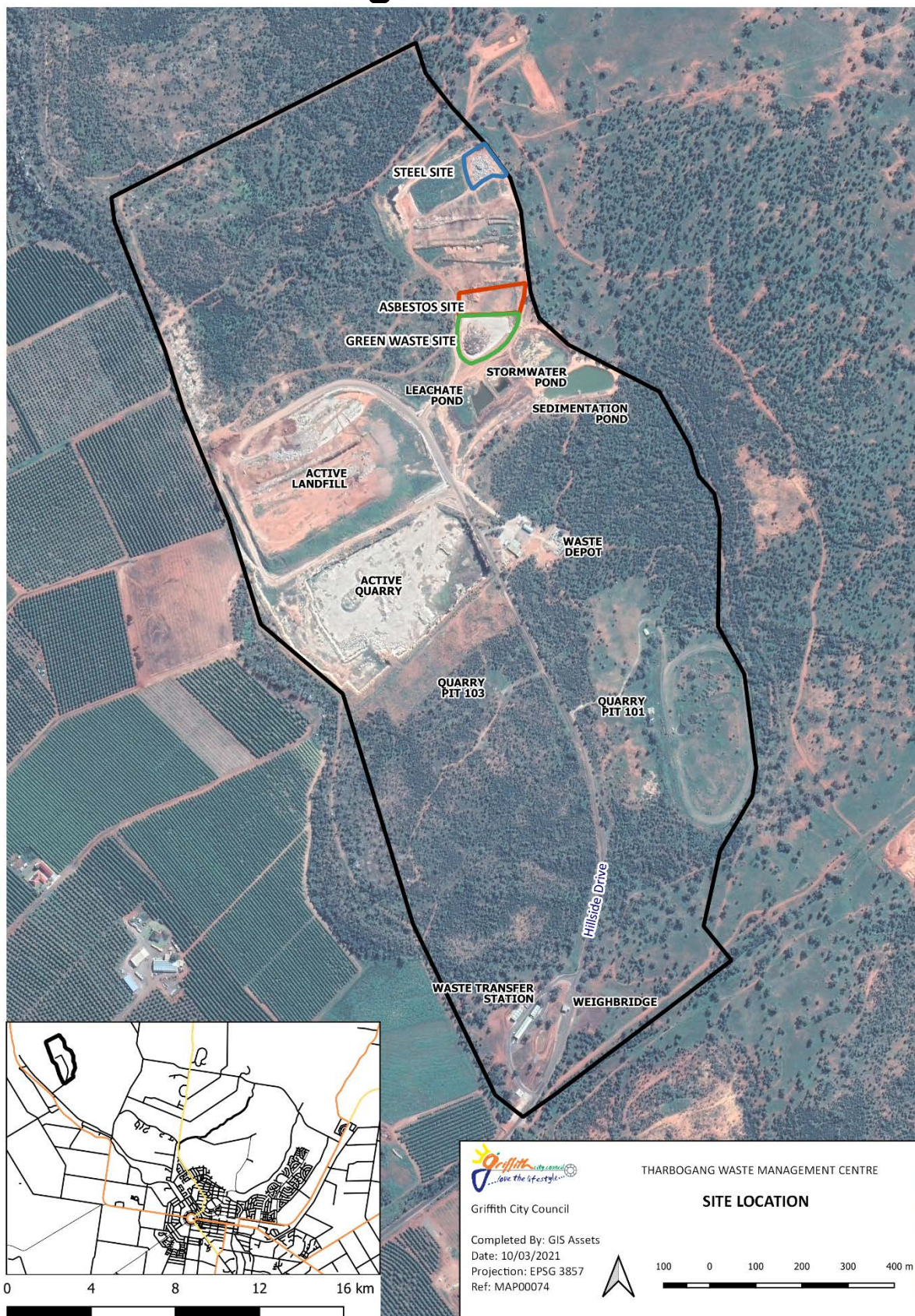
Approved: Waste Operations Manager	Group / System: Utilities/Waste Management	Document ID: 19/56103	Version: 4
Relevant To: Waste Operations	Date Issued: 23/7/19	Revised: 08/05/23	Status: Current
			Page: 1 of 25

Contents

Locality Map for Tharbogang Waste Management Centre	3
Location of Filling Points at Tharbogang Waste Management Centre	4
Overhead Filling Point	5
Isolating Ball Valve for Site 50mm HDPE Water Main	6
Tank 5 & 6 Details	7
End of Main	9
Tanks 7 & 8 Details	10
Fire Hydrant Locations and distances between them	12
Hydrant 5	13
Hydrant 4	13
Hydrant 3	14
Hydrant 2	14
Hydrant 1	15
Water Main Pressure test	15
ATTACHMENT 1:	16
Schematic of Landfill Water Pressure Tank System.....	16
ATTACHMENT 2:	17
Operation of Monitor (Water Cannon)	17
ATTACHMENT 3:	18
Work Instruction for filling up the Water Cart	19
ATTACHMENT 4:	23
Work Instruction for Operation of Water Tanker	23

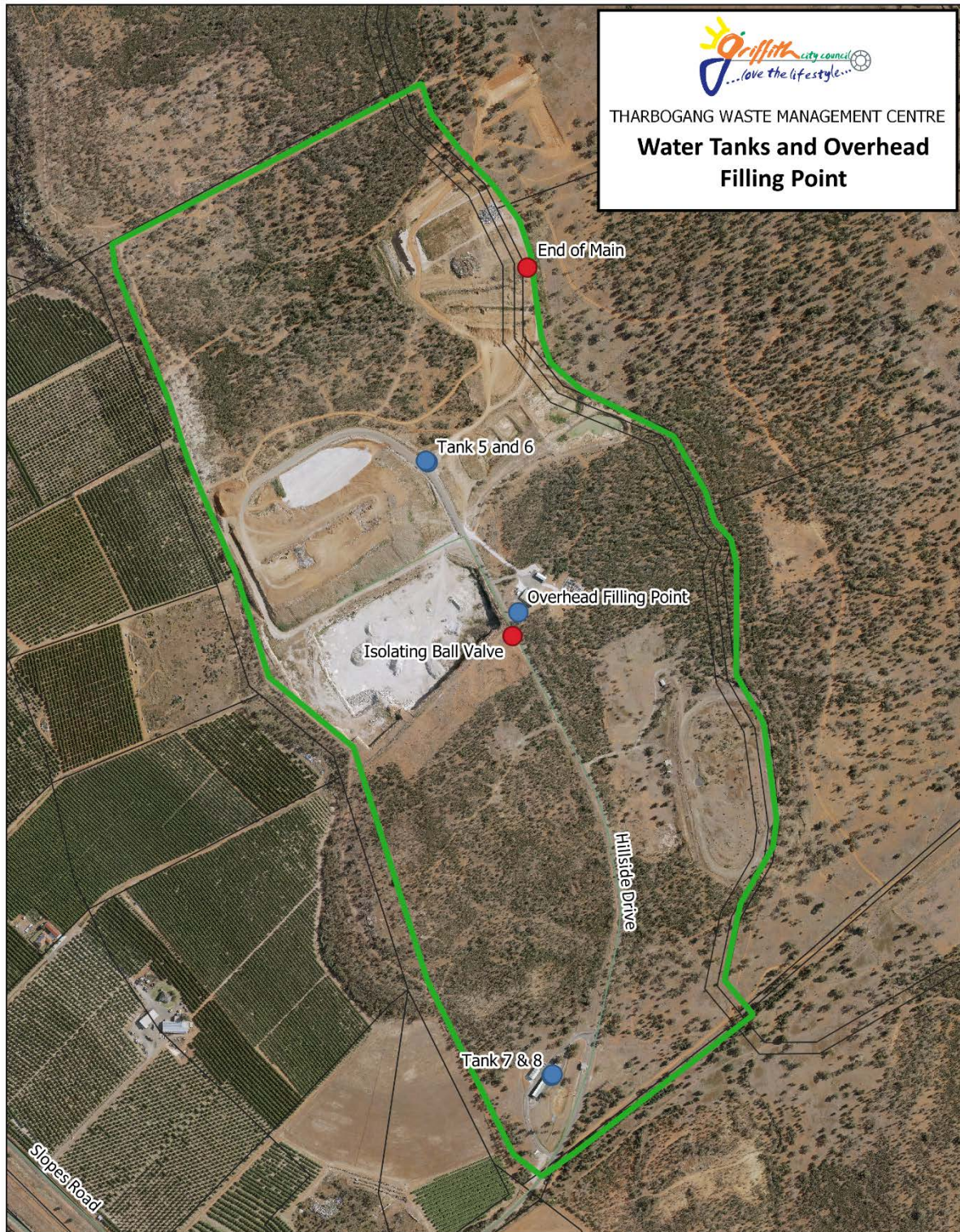
Approved: Waste Operations Manager	Group / System: Utilities/Waste Management	Document ID: 19/56103	Version: 4
Relevant To: Waste Operations	Date Issued: 23/7/19	Revised: 08/05/23	Status: Current
			Page: 2 of 25

Locality Map for Tharbogang Waste Management Centre



Approved: Waste Operations Manager	Group / System: Utilities/Waste Management	Document ID: 19/56103	Version: 4
Relevant To: Waste Operations	Date Issued: 23/7/19	Revised: 08/05/23	Status: Current
			Page: 3 of 25

Location of Filling Points at Tharbogang Waste Management Centre



Disclaimer: This map is intended for general information purposes only. Griffith City Council does not guarantee its accuracy, completeness or suitability for any particular purpose. Users must exercise their own skill and care in using this map and carefully evaluate the accuracy, currency, completeness and relevance of the map before relying on it. The map is not a substitute for independent professional advice and, to the extent permitted by law, Griffith City Council is not liable for any loss or damages arising out of any inaccuracy, error or omission contained in the map.

Completed By: GIS Assets ; U. Wijethunga

Date: 20/05/2021

Projection: EPSG:28355

Ref: MAP0228

0 0.2 0.4 km



Approved: Waste Operations Manager	Group / System: Utilities/Waste Management	Document ID: 19/56103	Version: 4
Relevant To: Waste Operations	Date Issued: 23/7/19	Revised: 08/05/23	Status: Current
			Page: 4 of 25

Overhead Filling Point

Site:	Landfill Wash Bay
Capacity:	Unlimited
Filling Method:	Pump constant pressure
Fittings:	Over Head Spout
Inlet Size:	75mm copper
Outlet Size:	75mm copper
Level Control:	-
Back Flow Devise:	Yes
Isolation Valve:	1
Filling Time	20min to fill 10,000L 30min to fill 15,000L

Photo Showing Overhead filling point



Approved: Waste Operations Manager	Group / System: Utilities/Waste Management	Document ID: 19/56103	Version: 4
Relevant To: Waste Operations	Date Issued: 23/7/19	Revised: 08/05/23	Status: Current
			Page: 5 of 25

Isolating Valve for Site 50mm HDPE Water Main

Location:	North Eastern top corner of Quarry off road.
Fittings:	50mm isolating ball valve
Isolation Valve:	1

Location of Isolating Ball Valve



Approved: Waste Operations Manager	Group / System: Utilities/Waste Management	Document ID: 19/56103	Version: 4
Relevant To: Waste Operations	Date Issued: 23/7/19	Revised: 08/05/23	Status: Current
			Page: 6 of 25

Tank 5 & 6 Details

Site:	Landfill Access Rd
Capacity:	22,500ltr's x 2
Filling Method:	Pump constant pressure
Fittings:	100mm camlock
	65mm Storz
Inlet Size:	50mm copper
Outlet Size:	100mm copper
Level Control:	Float Valve
Back Flow Devise:	Yes
Isolation Valve:	1
Filling Time	11min to fill 15,000L

Photo showing Camlock fitting (female)



Photo showing Storz fitting



Approved: Waste Operations Manager	Group / System: Utilities/Waste Management	Document ID: 19/56103	Version: 4
Relevant To: Waste Operations	Date Issued: 23/7/19	Revised: 08/05/23	Status: Current
			Page: 7 of 25

Photo showing Isolation valves on HDPE 50mm feeder main and 50mm copper filling pipe



Photo showing tanks being connected by 100mm HD PVC.



Approved: Waste Operations Manager	Group / System: Utilities/Waste Management	Document ID: 19/56103	Version: 4
Relevant To: Waste Operations	Date Issued: 23/7/19	Revised: 08/05/23	Status: Current
			Page: 8 of 25

End of Main

Location:	Near steel site
Fittings:	50mm isolating valve with a threaded end cap
Isolation Valve:	1

Photo showing valve box



Photo showing capped water main



Approved: Waste Operations Manager	Group / System: Utilities/Waste Management	Document ID: 19/56103	Version: 4
Relevant To: Waste Operations	Date Issued: 23/7/19	Revised: 08/05/23	Status: Current
			Page: 9 of 25

Tanks 7 & 8 Details

Site:	Waste Transfer Station
Capacity:	2 x 10,000 ltr
Filling Method:	Storm water runoff from WTS structures
Fittings:	65mm storz on each tank
Isolation Valve:	Nil

Photo of Water Tanks



Photo of flushing point



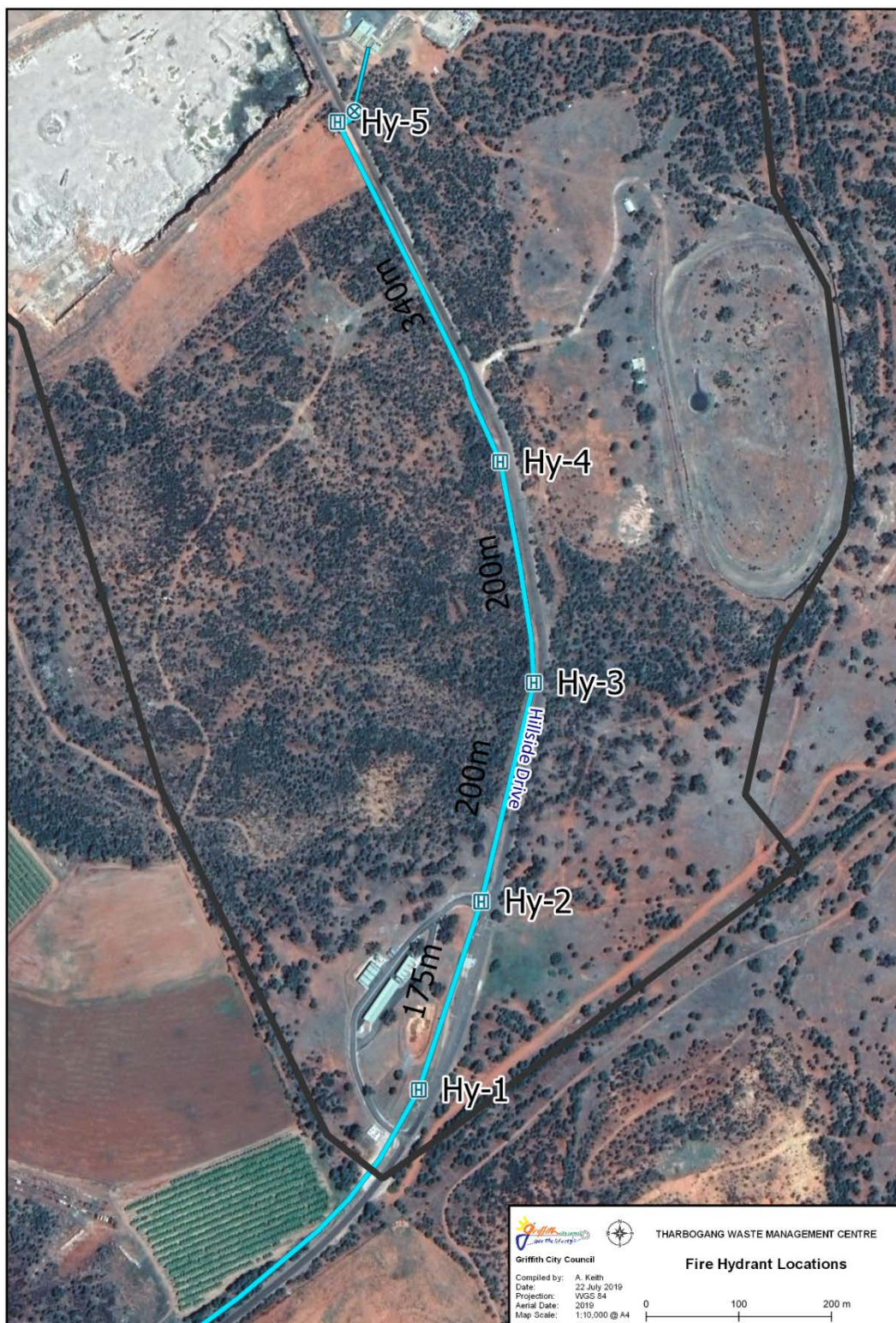
Approved: Waste Operations Manager	Group / System: Utilities/Waste Management	Document ID: 19/56103	Version: 4
Relevant To: Waste Operations	Date Issued: 23/7/19	Revised: 08/05/23	Status: Current
			Page: 10 of 25

Photo of 65mm Storz fitting



Approved: Waste Operations Manager	Group / System: Utilities/Waste Management			Document ID: 19/56103	Version: 4
Relevant To: Waste Operations	Date Issued: 23/7/19	Revised: 08/05/23	Status: Current	Page: 11 of 25	

Fire Hydrant Locations and distances between them



Approved: Waste Operations Manager	Group / System: Utilities/Waste Management	Document ID: 19/56103	Version: 4
Relevant To: Waste Operations	Date Issued: 23/7/19	Revised: 08/05/23	Status: Current
			Page: 12 of 25

Photos of Hydrants along the main that can be “shipped” by the Rural Fire Service or NSW Fire and Rescue.

Hydrant 5

Asset id - PHY02387 taken from mapping



Hydrant 4

Asset id - PHY02386



Approved: Waste Operations Manager	Group / System: Utilities/Waste Management	Document ID: 19/56103	Version: 4
Relevant To: Waste Operations	Date Issued: 23/7/19	Revised: 08/05/23	Status: Current
			Page: 13 of 25

Hydrant 3

Asset Id-PHY02385



Hydrant 2

Asset Id- PHY02384



Approved: Waste Operations Manager	Group / System: Utilities/Waste Management	Document ID: 19/56103	Version: 4
Relevant To: Waste Operations	Date Issued: 23/7/19	Revised: 08/05/23	Status: Current
			Page: 14 of 25

Hydrant 1

Asset Id- PHY02383



Water Main Pressure test

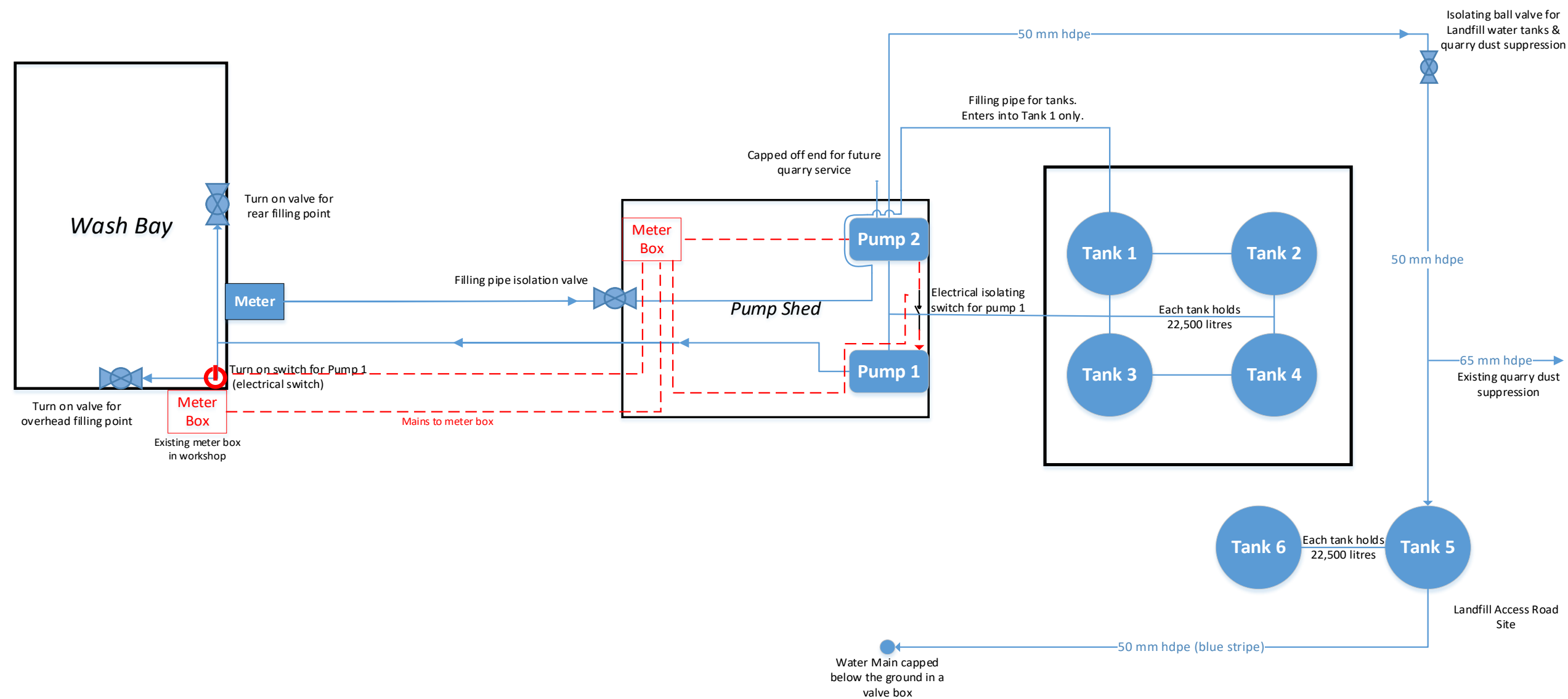
The pressure tests were done in September 2017

Results:

Maximum Pressure	425 kpa
Minimum Pressure	220 kpa

Approved: Waste Operations Manager	Group / System: Utilities/Waste Management	Document ID: 19/56103	Version: 4
Relevant To: Waste Operations	Date Issued: 23/7/19	Revised: 08/05/23	Status: Current
			Page: 15 of 25

Schematic of Landfill Water Pressure Tank System



Created: 1 August 2019
19/53081 v.2

Approved: Waste Operations Manager	Group / System: Utilities/Waste Management	Document ID: 19/56103	Version: 4
Relevant To: Waste Operations	Date Issued: 23/7/19	Revised: 08/05/23	Status: Current
			Page: 16 of 25

ATTACHMENT 2:






Operation of Monitor (Water Cannon)

WORK INSTRUCTION
(Blanks not to be photocopied. Print direct from TRIM)
(Printed on 28-Sep-20 at 16:08)



(WM-WI-013) Operation of Monitor (Water Cannon)

Reminders		Related PPMs	Special note	Warning note
See tools & materials list		Types of protection	Additional person(s) required	

Overview	Instructions & Explanations
Pre-Start Checks Before loading onto the hook lift truck: 1.1 Undertake plant pre-start check. 1.2 Check diesel tank is full (located in front of tank) □ ₇ . 1.3 Check oil is at optimum level. 1.4 Remove cover off engine. 1.5 Remove cover off monitor.	□₁ 3.2 AUX Button and Lights 
Loading and Filling See Work Instruction (WM-WI-016) Filling of Water Cart for instructions on filling the water cart from the rear, overhead channel or water tanks.	□₂ 3.4 Turning on monitor valve 
Using the Monitor 3.1 Grab the remote control out of the cab. 3.2 Turn on the unit by pressing AUX on the remote control. Lights will turn on □ ₁ . 3.3 Turn pump on to 1 st glow motor (GL for approximately 4 seconds) then start pump motor by turning key to ST position. 3.4 Turn on monitor valve by pressing toggle switch up for 15 seconds until the light is green □ ₂ . 3.5 Pull throttle to provide pressure to monitor unit □ ₃ . At full pressure it will take a minimum of 15 minutes to empty the tank.	□₃ 4.2 Throttle – pull & twist 
Shutdown Procedure 4.1 Water pressure reducing indicates low water level in tank. 4.2 Reduce engine rev's by twisting throttle knob clockwise □ ₃ . 4.3 Turn off monitor valve by holding down toggle switch until the light is RED □ ₅ . 4.4 Turn engine off by turning key anti-clockwise to the OFF position □ ₄ . 4.5 Turn off remote control (AUX Button) and replace in the cradle in cab □ ₁ . 4.6 Remove tank unit from Hook Lift Truck. 4.7 Replace covers over motor and monitor. 4.8 Remove key and put back in key lock box located in tool lock-up □ ₅ .	□₄ 4.3 OFF position 
	□₅ 4.4 Hold down toggle switch 

Approved: Waste Operations Manager	Department: Waste Operations	Record No: 18/107007	Version: 2
Date Issued: 21 January 2019	Date Revised: 16 September 20	Status: Approved	Page: 1 of 2

Approved: Waste Operations Manager	Department: Utilities/Waste Management	Record No: 19/56103	Version: 4
Date Issued: 21/8/19	Date Revised: 22/06/2021	Status: Approved	Page: 17 of 25

WORK INSTRUCTION
(Blanks not to be photocopied. Print direct from TRIM)
(Printed on 28-Sep-20 at 16:09)



(WM-WI-013) Operation of Monitor (Water Cannon)



<p>PPE Required</p> <ul style="list-style-type: none"> Safety Boots Protective Clothing Gloves Eye Protection 	<p>Tools & Materials</p> <ul style="list-style-type: none"> Hook lift truck Fire monitor
<p>Pre-Checks (Things to Check Before)</p> <ul style="list-style-type: none"> Before loading onto hook lift truck: Check diesel tank is full Check oil is at optimum level 	<p>Checklist (Things to Check During)</p> <ul style="list-style-type: none"> Pre-Operational Checklist
<p>Post-Checks (Things to Check After)</p> <ul style="list-style-type: none"> 	<p>Information Details</p>
<p>(Additional Person(s) Required)</p> <ul style="list-style-type: none"> Landfill Overseer Landfill Operators Other Staff 	<p>Related PPM's</p> <ul style="list-style-type: none"> Refer to (WM-WI-016) Filling of Water Cart

I have read the above work instruction:		
Name	Signature	Date
Cameron Grant		
Owen Bowen		
Shane Gaffey		
Quentan Byrne		
Joe Aramini		
Josh Scarfo		
Domenic Catanzariti		
John Roser		

Approved: Waste Operations Manager	Department: Waste Operations	Record No: 18/107007	Version: 2
Date Issued: 21 January 2019	Date Revised: 16 September 20	Status: Approved	Page: 2 of 2

Tank Fitting Details

Fitting Type	Camlock
Diameter	75mm

Approved: Waste Operations Manager	Department: Utilities/Waste Management	Record No: 19/56103	Version: 4
Date Issued: 21/8/19	Date Revised: 22/06/2021	Status: Approved	Page: 18 of 25

ATTACHMENT 3:

Work Instruction for filling up the Water Cart

WORK INSTRUCTION

(Blanks not to be photocopied. Print direct from TRIM)
(Printed on 01-Nov-19 at 12:11)



(WM-WI-016) Filling the Water Cart

Reminders		Related PPMs	Special note	Warning note
See tools & materials list		Types of protection	Additional person(s) required	

Overview	Instructions & Explanations
Pre-Start Checks <p>Before filling commences, ensure the following procedures have been undertaken:</p> <ul style="list-style-type: none"> Remove the covers off the pump and monitor. Check diesel tank is full (located in front of tank). Check oil is at optimum level. Put the key into the ignition. Ensure that the suction hoses for the water tanks and channel are on the unit. Load tank unit onto hook lift truck. <p>CHOOSE THE FILLING METHOD FROM THE OPTIONS BELOW:</p> <ol style="list-style-type: none"> Filling from the Rear (20 minutes) Filling from Overhead (20 minutes) Filling from the Channel (12 minutes) Filling from the Water Tanks (12 minutes) 	<p>□₁ Connect Delivery Hose</p> <p>□₂ Position under Filling Hose</p> <p>□₃ Winder -</p> <p>Turn clockwise to RAISE pipe</p> <p>Turn anti-clockwise to LOWER pipe.</p> <p>□₄ Delivery Valve for Overhead Filling</p>
Filling from the Rear (Approximately 10,000 litres in 20 minutes) <ol style="list-style-type: none"> Reverse the hook lift truck into the wash bay and connect the delivery hose. □₁ Turn on the pump switch (see photo below). Turn the delivery valves on at the wall and at the water cart. Disconnect the delivery hose and place back on the wall. Turn off the pump switch (see photo below). 	
Filling from Overhead (Approximate filling time is 20 minutes) <ol style="list-style-type: none"> Reverse the hook lift truck into the wash bay, lining up the overhead filling hose with the tank funnel. □₂ Lower the filling hose by turning the winder anti-clockwise to lower the pipe until it is inside the funnel. □₃ Turn on the pump switch (see photo below). Turn on delivery valve to overhead unit. □₄ Once the tank is filled, turn off the delivery valve □₄ and raise the filling hose by turning the winder clockwise. Turn off the pump switch (see photo below). 	

Approved: Waste Operations Manager	Department: Waste	Record No: 19/75833	Version: 1
Date Issued: 26/9/19	Date Revised: —	Status: Approved	Page: 1 of 4

Approved: Waste Operations Manager	Department: Utilities/Waste Management	Record No: 19/56103	Version: 4
Date Issued: 21/8/19	Date Revised: 22/06/2021	Status: Approved	Page: 19 of 25

(WM-WI-016) Filling the Water Cart

Filling from the Water Tanks (Approximate filling time is 12 minutes)

- 1.1 Remove the GREY filling hose from the cradle in the flat bed tray.
- 1.2 Connect hose to water tank and water cart. ☐5
- 1.3 Open the valve at base of tank.
- 1.4 Open the valves on the water tank - as shown in photo ☐6
- 1.5 To start sucking up water, on the Suction Valve Control push the toggle switch UP until the light turns GREEN. ☐7
- 1.6 To increase the speed of the pump, twist the throttle knob clockwise: to reduce the speed of the pump twist throttle knob anti-clockwise. ☐8
- 1.7 To stop sucking up water, first turn rev's down by twisting the throttle knob clockwise, then depress the toggle switch on the Suction Valve Control until the light turns RED. ☐9
- 1.8 Disconnect hose from water tank and water cart.
- 1.9 Return hose to the cradle in the flat bed tray.



☐5 Hose Connection to Water Tank



☐6 Open Valve Configuration to Fill Water Cart



☐7 To Turn Suction Valve ON, Push UP the Toggle Switch



☐8 Reduce rev's by twisting throttle knob clockwise



Approved: Waste Operations Manager	Department: Waste	Record No: 19/75833	Version: 1
Date Issued: 26/9/19	Date Revised: 30/01/2020	Status: Approved	Page: 2 of 4

Approved: Waste Operations Manager	Department: Utilities/Waste Management	Record No: 19/56103	Version: 4
Date Issued: 21/8/19	Date Revised: 22/06/2021	Status: Approved	Page: 20 of 25

(WM-WI-016) Filling the Water Cart

Filling from the Channel (Approximate filling time is 12 minutes)

- 1.10 ⚠ Operator must access a suitable site via Slopes Road and Kidman Way. Go down Slopes Road so you can turn in to the fill up bay. □₁₀ □₁₁
- 1.11 Remove the BLACK filling hose from the cradle in the flat bed tray.
- 1.12 Connect to water cart and place strainer end in channel so that the strainer will constantly under water □₁₂
- 1.13 To start sucking up water, on the Suction Valve Control push the toggle switch UP until the light turns green. □₇
- 1.14 The operator must "jiggle" the suction hose initially to aid in priming, while the hose is in the channel, to commence the sucking process.
- 1.15 To increase the speed of the pump, twist the throttle knob clockwise: to reduce the speed of the pump twist throttle knob anti-clockwise. □₈
- 1.16 To stop sucking up water, first turn rev's down by twisting the throttle knob clockwise, then depress the toggle switch on the Suction Valve Control until the light turns red. □₉
- 1.17 Disconnect hose from water cart and remove excess water.
- 1.18 Secure the hose in the cradle on the flat bed tray.
- 1.19 ⚠ When completed, you MUST straighten up the truck so you can see oncoming traffic and traffic from behind. Do not exit from the intersection directly behind and to the left hand side.

□₉ To Turn Suction Valve OFF, Press DOWN the Toggle Switch.



□₁₀ Access to Channel Filling Bay



When Finished

- 1.20 Remove tank unit from hook lift truck.
- 1.21 Replace covers over motor and monitor.
- 1.22 Remove key and put back in key lock box located in tool lock-up.

□₁₁ Channel Location



□₁₂ Filling up at channel with suction hose



Approved: Waste Operations Manager	Department: Waste	Record No: 1975633	Version: 1
Date Issued: 26/9/19	Date Revised: 30/01/2020	Status: Approved	Page: 3 of 4

Approved: Waste Operations Manager	Department: Utilities/Waste Management	Record No: 19/56103	Version: 4
Date Issued: 21/8/19	Date Revised: 22/06/2021	Status: Approved	Page: 21 of 25

(WM-WI-016) Filling the Water Cart

PPE Required	Tools & Materials
<ul style="list-style-type: none"> Appropriate PPE – gloves, safety boots. 	<ul style="list-style-type: none"> Hook Lift Truck Fire Monitor Water supply – rear, overhead, channel, water tanks Keys
✓ Pre-Checks (Thing to Check Before)	☑ Checklist (Things to Check During)
<ul style="list-style-type: none"> WM-SW-477 Operation of Hook Lift Truck WM-WI-013 Operation of Monitor (Fire Cannon) WM-SW-479 Operation of Monitor (Fire Cannon) 	
✓ Post-Checks (Things to Check After)	📄 Information Details
<ul style="list-style-type: none"> Keys have been returned to key box. Cover has been placed on pump and motor. 	
👤 (Additional Person(s) Required)	

I have read the above work instruction:		
Name	Signature	Date
Cameron Grant		
Owen Bowen		
Shane Gaffey		
Quentan Byrne		
Joe Aramini		
Josh Scarfo		
Domenic Catanzariti		
John Roser		

Approved: Waste Operations Manager	Department: Waste	Record No: 19/75833	Version: 1
Date Issued: 25/9/19	Date Revised: 30/01/2020	Status: Approved	Page: 4 of 4

Approved: Waste Operations Manager	Department: Utilities/Waste Management	Record No: 19/56103	Version: 4
Date Issued: 21/8/19	Date Revised: 22/06/2021	Status: Approved	Page: 22 of 25

ATTACHMENT 4:

Work Instruction for Operation of Water Tanker







WORK INSTRUCTION

(Blanks not to be photocopied. Print direct from TRIM)
(Printed on 05-Nov-20 at 14:11)



(WM-WI-017) Operation of Water Tanker

Reminders		Related PPMs	Special note	Warning note
See tools & materials list	Types of protection	Additional person(s) required		





Overview	Instructions & Explanations
Pre-Start Checks Before operating the Water Tanker: 1.1 Undertake plant pre-start check (ipad). 1.2 Allow truck to build up air pressure (truck will not move until this sufficient air pressure has built up). 1.3 Check water tank is full. 1.4 Note that the capacity of the tank is 15,000 liters	<input type="checkbox"/> 1 Photo of PTO Switch 
In Cab controls 2.1 Turn on the PTO switch before operation of the Water Tanker features. <input type="checkbox"/> 1. 2.2 The Master and Pump switches must be ON at all times to operate the Water Tanker features. <input type="checkbox"/> 2  2.3 Beacon switch turns on the amber flashing LED lights. 2.4 Work switch turns on the rear working lights. 2.5 Left Switch turns on the LHS "Ducks Foot". 2.6 Right switch turns on the RHS "Ducks Foot". 2.7 Bar switch turns on the low pressure spray bar. 2.8 High BAR switch turns on the high pressure spray bar. 2.9 Water tank level guage and pressure controler. The pressure controler is not to be altered. <input type="checkbox"/> 3 	<input type="checkbox"/> 2 Photo of incab control panel  <input type="checkbox"/> 4 Joy Stick monitor control 
Using the Monitor: It takes 25 minutes to empty a full tank. 3.1 To use joy stick controler <input type="checkbox"/> 4. 3.2 Turn on the unit by pressing AUX on the Joy Stick control. Lights will turn on. 3.3 The valve can either be opened by using the trigger swith at the front of the Joy Stick or be locked in by pressing the valves buttons (green orange & red) on the Joy Stick. 3.4 The pattern of the stream can be changed using the "thumb wheel". 3.5 The OSC button will automatically set the monitor to back and forth motion. 3.5 Moving the Joy Stick side to side & up and down will manually move the monitor. 3.6 The Hand Held Controller can be taken out side of the cab to operate the monitor. The buttons are the same as the Joy Stick controls. The controller allows for the movement of the monitor, modification of the stream, it is turned on buy pressing the AUX button. <input type="checkbox"/> 5 3.7 The handhelf controler must be put back in its bracket after use this will charge the internal battery of the controller. 3.8 At ful PTO rpm (2700) the stream will reach between 25 & 30 meters. 3.9 The monitor has the ability to be roated 360 degrees.	<input type="checkbox"/> 5 Hand Held Controller Unit 

Approved: Waste Operations Manager	Department: Waste Operations	Record No: 20/93117	Version: 1
Date Issued: 17 September 2020	Date Revised:	Status: Approved	Page: 1 of 3

Approved: Waste Operations Manager	Department: Utilities/Waste Management	Record No: 19/56103	Version: 4
Date Issued: 21/8/19	Date Revised: 22/06/2021	Status: Approved	Page: 23 of 25

(WM-WI-017) Operation of Water Tanker

Filling from Overhead (Approximate filling time is 30 minutes)

- 4.1 Reverse the Water Tanker into the wash bay, lining up the overhead filling hose with the tank funnel. 
- 4.2 There is no need to adjust the valve set up at the rear of the truck when filling from the overhead standpipe. 
- 4.3 Turn on the pump switch (see photo below). 
- 4.4 Turn on delivery valve to overhead unit. 
- 4.5 You will know that the tank is full of water will come out from the tank over flow valve located underneath the truck.
- 4.6 Once the tank is filled, turn off the pump switch first then the over head delivery valve.
- 4.7 It is important to note that filling from the overhead standpipe is the preferred method for this appliance.


5.2 Arrangement of valves for Filling from Overhead.







6.3 Arrangement of valves for Filling from the rear



Filling tank from the rear (Approximate filling time is 30 minutes)

- 6.1 Reverse the Water Tanker into the wash bay.
- 6.2 Connect the delivery hose to the rear of the truck
- 6.3 Rearrange the valves as per photo 
- 6.4 Turn the delivery valves on at the wall.
- 6.5 Once tank is full remove the delivery hose and put the rear valves back into standard arrangement.

Filling the tank using suction (Approximate filling time is 9 minutes)

- 7.1 Hoses and screen are held in toolboxes on either side of the truck.
- 7.2 Connect delivery hose to outlet and put end with screen in the body of water.
- 7.3 Arrange valves as follows 
 - Close tank suction valve 
 - Open rear suction (pull out the "Push/Pull" switch) 
 - Open tank fill 
- 7.4 Start the pump (10 sec after opening rear suction) by pushing the toggle switch (labelled "Pump") down.
- 7.5 When the water level is full (rear clear tube) turn off Pump do not let it over follow.
- 7.6 Disconnect the delivery hoses and strainer and stow away into storage compartments.

7.3 Valves arrangement for suction



5.1 Reversing Water Tanker under overhead filling point.



5.3 Pump Switch



5 Delivery Valve for Overhead Filling



Approved: Waste Operations Manager	Department: Waste Operations	Record No: 20/53117	Version: 1
Date Issued: 17 September 2020	Date Revised:	Status: Approved	Page: 2 of 3

Approved: Waste Operations Manager	Department: Utilities/Waste Management	Record No: 19/56103	Version: 4
Date Issued: 21/8/19	Date Revised: 22/06/2021	Status: Approved	Page: 24 of 25

(WM-WI-017) Operation of Water Tanker



📢 PPE Required <ul style="list-style-type: none"> Safety Boots Protective Clothing Gloves Eye Protection 		✂ Tools & Materials	
✓ Pre-Checks (Things to Check Before) <ul style="list-style-type: none"> Water tank is full Deisel tank is full 		☑ Checklist (Things to Check During) <ul style="list-style-type: none"> Pre-Operational Checklist 	
✓ Post-Checks (Things to Check After) <ul style="list-style-type: none"> Water tank is full Deisel tank is full 		📄 Information Details	
👤 (Additional Person(s) Required) <ul style="list-style-type: none"> Landfill Staff 		📋 Related PPM's	

I have read the above work instruction:		
Name	Signature	Date
Cameron Grant		
Owen Bowen		
Shane Gaffey		
Quantan Byrne		
Joe Aramini		
Josh Scarfo		
Domenic Catanzariti		
John Roser		

Approved: Waste Operations Manager	Department: Waste Operations	Record No: 20/93117	Version: 1
Date Issued: 17 September 2020	Date Revised:	Status: Approved	Page: 3 of 3

Tank Fitting Details

Fitting Type	Camlock
Diameter	100mm